



ISO 9001: 2015

Regd. No.: NSIC/GP/MUM/2022/0051564

PBH ENGINEERING & CONSTRUCTION PRIVATE LIMITED

A STAR SUPPLIER ON INDIAMART



P



B



H



GROUP

www.pbhgroup.in
www.pbhconstruction.net



Regd. Office: Shop No. 26, Shreeji Apartment, Plot No. 15/16, Sector – 06, Kamothe, Navi Mumbai - 410209

CONTENTS



Certificates	2 - 3
Introduction	4
Products	5
Group Companies	6
Core Competencies	7 - 18
Clients	19 – 26
Facilities	27
Organization Structure.....	28
Image Gallery.....	29
Contacts	30

CERTIFICATES

B		Type of Enterprise		
		Micro	Small	Medium
		A	B	C
		D	E	F
		UAM No. MH27A0029271		

Udyog Aadhaar Registration Certificate

Udyog Aadhaar Number: MH27A0029271
 Name of Enterprise: PBH ENGINEERING & CONSTRUCTION PVT. LTD.
 Location of Plant Details:

SN	Flat/Door/Block No.	Name of Premises/Building Village	Road/Street/ Lane	Area/Locality	City	Pin	State	District
1	SHOP NO. 26	SHREEJI APARTMENTS	SECTOR 6	KAMOTHE	NAVI MUMBAI	410209	MAHARASHTRA	RAIGAD

Official Address of Enterprise: SHOP NO. 26, SHREEJI APARTMENTS, PLOT NO. 15/16, SECTOR 6, KAMOTHE, NAVI MUMBAI
 District: RAIGAD State: MAHARASHTRA PIN: 410209
 Mobile No: 9920946341 Email: pbhgroup04@gmail.com

Date of commencement: 18/10/2013
 Major Activity: MANUFACTURING
 Enterprise Type: Small
 Previous Registration details-if any: 270241101123

SN	NIC 2 Digit	NIC 4 Digit	NIC 5 Digit Code	Activity Type
1	24 - Manufacture of basic metals	2431 - Casting of iron and steel	24311 - Manufacture of tubes, pipes and hollow profiles and of tube or pipe fittings of cast-iron/ cast-steel	Manufacturing
2	25 - Manufacture of fabricated metal products, except machinery and equipment	2511 - Manufacture of structural metal products	25119 - Manufacture of other structural metal products	Manufacturing
3	42 - Civil Engineering	4220 - Construction of utility projects	42209 - Construction of utility projects n.e.c.	Manufacturing
4	43 - Specialized construction activities	4330 - Building completion and finishing	43303 - Interior and exterior painting, glazing, plastering and decorating of buildings or civil engineering structures	Manufacturing

Acknowledgement: Date of Filing: 16/03/2019 Date of Printing: 24/03/2019

Disclaimer: This is computer generated statement, no signature required.
 Printed from udyogaadhaar.gov.in
 MyMsmc Mobile App (Beta Version) is available now for download. <https://play.google.com/store/apps/details?id=msmc.mymcmc>



Certificate of Registration

This is to certify that Quality Management System of

PBH Engineering & Construction Pvt. Ltd.

Shop No.:26, Shreeji Apartment, Plot No. 15/16, Sector 06, Kamothe, Navi Mumbai-410209, India.



Has been assessed and found to conform to the requirements of

ISO 9001 : 2015

For Following Scope:

To carry on the business of providing services of engineering and construction works including MS/SS Structural Fabrication/Erection, Civil Construction, Building Construction, Furniture Fitting and furnishing, Electrical Fittings, Tiles Fitting, Carpets, Panel Rod, PVC Wood, POP, Grills, Interior & Exterior Decorators, Mining, Cabling, Land Developing, ACP/Aluminum Elevations, Glass Fittings, Building Elevations, Traffic Signs, Crash Barrier, Road Marking, Kerb Painting, Labour supply, work and other related services.

Certificate No.: 1011-QMS-BA-09-9102-CIAS-00839-IN

This certificate is valid from 18-Sept-2019 until 18-Sept-2022 and remain valid subject to satisfactory surveillance audits on 17-Sept-2020 and 17-Sept-2021. Re-certification audit due on 18-Sept-2022. Certification expiry on 17-Sept-2022.


John B.
Certification Manager
Gulf Lloyds Business Assurance

GLBA is a division of Gulf Lloyds Industrial Services (Canada) Inc., as CAB for System certification. GLBA is accredited by CIAS-BAR (Canadian International Accreditation Services). For verification of this certificate: WWW.GL-BA.COM ; The certificate remains the property of Gulf Lloyds Business Assurance, to whom it must be returned on request. Lack of fulfillment of certification terms and conditions at all times, may render this certificate invalid.



ISO 9001 : 2015

AUTHORISED APPLICATOR OF 3M TRAFFIC & SECURITY



This is to certify that M/s PBH Engineering & Construction Pvt Ltd located at Sector 6Q, Kamothe Panvel, Maharashtra is an Authorized Applicator* of Road Safety Furniture products of 3M Traffic Safety & Security Division.



Atul Shukla
Vice President - Traffic Safety & Security Division

(* as per the mutually signed agreement)

Valid until December 2024

3M India Limited
Traffic Safety & Security Division
Concorco Block, UD City, 24, Vittal Malya Road, Bangalore-550001
• Tel: +91 80 2223 1414 • Fax: +91 80 2223 1450 • www.3m.com/india

INTRODUCTION

PBH ENGINEERING & CONSTRUCTION PRIVATE LIMITED is a well-organized organization under the leadership of Mr. P.K. Singh (MBA in Marketing & HR).

M/s PBH GROUP has been promoted primarily to meet the ever-growing fabrication, erection, testing, commissioning and maintenance activities in Infrastructure sector, Pre engineered building, Oil & Gas Industries, Power Plant with Design, Engineering, Procurement, Fabrication, Erection, Testing and Commissioning for Civil, Mechanical, Electrical & Infrastructure job covering as lump sum turnkey projects under one roof.

We are in Infrastructure Sector since 2013 and during their association with the Infrastructure Sector, Company has been able to serve NHAI, JNPT, ONGC, MTNL, MTDC, Various Smart Cities, Municipal Corporations as well as in private sectors like M/s L&T, ITD Cementation, IRCON, JMC, BSCPL, OSEPL, ASHOKA BUILDCON, GKC, MADHUCON, BLA, NOCIL, IGPL, RAJPATH, T&T, L&W, RUNGTA, GODREJ and many more in accomplishing their targets against all odds in the record time and without any delay in cost and time overruns. We have many associated and sub contractors in executing successfully prestigious contracts in the field of Fabrication, Erection, Testing, Commissioning & Civil constructions.

Further the company owned very well laid out workshop at Kalamboli, Navi Mumbai with adequate Machineries & Equipment to undertake all types of fabrication job and also tie up with many workshops across India.

The significant growth of M/s PBH GROUP has been achieved due to its proven skills in Advance Planning, Sound Project Management, Quality Assurance, Timely Completion, Safety Consciousness, Motivated and Dedicated construction manpower and well-maintained Construction Equipment.

With the rich experience and the best resources lead by professionally qualified management, M/s PBH Group is with full spirit, best efforts and commitment ready to take up challenging Projects in the field of Construction Project Management.

PRODUCTS

BUS STOP SHELTER →



← **TOLL BOOTH**

TOLL PLAZA CANOPY →



← **OVER HEAD GANTRY**

ROAD SIGNAGE →



← **CANTILEVER BOARD**

PARKING SHED →



← **FOOT OVER BRIDGE**

CIVIL CONSTRUCTION →



and many more...

We Registered with:-

We are growing continuously to achieve our goal in the Infrastructure sector to provide the better services of Road furniture items at best price.

We are looking to work with all prestigious Organizations / Departments in Private as well as Government sectors.

So, we have registered with some important departments and also in process to get registration in others.

- C.O.I. U45202MH2013PTC249371
- NSIC NSIC/GP/MUM/2022/0051564
- ISO 9001 : 2015 QMS/092020/16188 FOR QUALITY
- ISO 3834-1 : 2021 QVA-PLHV-22-3017122 FOR WELDING
- ANSI/BIFMA E3-2012 QVA-PLHV-22-3017121
- UDYOG AADHAR UDYAM-MH-27-0021951
- START UP DIPP117126
- TRADE MARK 1402406
- GST 27AAHCP4080B1ZM

***We deliver a
Superior service on
time & complete all
works to maintain
program and client
satisfaction.***

CORE COMPETENCIES

Along with the key markets we serve, we bring multiple core competencies – central skills – to the work we do.

BUS STOP SHELTERS

We involve in manufacturing of various types of Bus Stop Shelters made by Mild Steel / Stainless Steel with all amenities & accessories like LED display board, Advertising board, CCTV Camera, Solar Systems, Sitting arrangement, Dustbin, Railing etc.

We offer three types of Bus stop shelters:-

1. STAINLESS STEEL BUS STOP SHELTER



This type of model is made by SS structure & ACP Advertising boards / LED display boards with lighting arrangement. There are so many designs in SS.



2. MILD STEEL BUS STOP SHELTER



Polycarbonate sheet with Advertising board, Sitting arrangement, Railing etc. or as per client requirements.

This type of model is made by MS structure with Roof covered by colour coated sheet /



3. MODERN BUS STOP SHELTER



Now there is so many pretty models of Modern Bus Shelters are available and



people prefer this type of model which are looking well as well as sustainable in long time with glorious views. It's made by SS / MS structures, Covered by Glass Fitting, LED Display, LED Advertisement Board Wooden look chair with all amenities & accessories complete.

4. THEMATIC BUS STOP SHELTERS



Thematic Bus Stop Shelter is a new concept it is based on the theme **"YOU THINK WE CREATE"** in which people feeling like seated in a special place. Generally we make the theme of public uses place, Heritage, Welfare Societies like Hospital, Airports, Railway Station, Post Office, School, Temple, Memorials etc.



We design, manufacture & install thematic bus stop shelters as per client's choices & requirements. Through this type of thematic design we try to aware people about Indian culture, believes, Life styles, Historical knowledge etc.

HOSPITAL THEME



TEMPLE THEME



AIRPORT THEME



SOLAR BUS STAND

(RANCHI SMART CITY)

CYCLE STAND



.....Apart from the above we have so many different designs and we also make as per client choice & requirements.

TOLL BOOTHS

There are two types of Toll Booths are available with us:

1. Ready-made Booths
2. On site manufactured Booths

Ready-made Booths made by MS structure outside covered by MS sheet & internal side covered by MDF boards. There are arrangements of 1 or 2 collection sliding window, 1 gate, required lights, fans etc.



On site manufactured Booths made by MS structural pipes / Aluminium pipes frame covered by Aluminium composite panel (Internal & External), used Toughened Glass (5 to 8 mm).



All types of Booths are available in both size Single & Reversible (Double) in different shapes & designs.

Generally, client will provide their own design but if the client insists we will provide our design with minimum cost and provide all products & services as per approved drawing & technical specifications.

ISLAND RAILING

We provide MS Island railing at Toll Plaza canopy to protect the booth from Vehicle. It's made by MS Pipe / ISMC / ISMB etc.



TOLL BOOTH PROTECTION GUARD





We fabricate and erect the MS guard made by MS round pipe for protection of toll booth against any mishap or crash due to touch of heavy vehicle and any type of accident. These protection guards provide safety to booth as well as staff who work in that booth. Generally, clients provide detail drawing as well as we also design, fabricate and erect as per client's specifications / requirements.

TOLL PLAZA CANOPY

We provide all products & services related to toll plaza like Designing, Providing, Fabrication & Installation of Structural Canopy, Booths, Software & Hardware systems, Street light, High Mast, NHA I Instruction / User Fee Boards and Civil works at entire premises of location as per approved drawing & technical specifications.



Generally, client provides their own designed drawing & specifications and we provide our products & services accordingly but if they insist we also provide designing of canopy. We have tied up with well qualified architect for Structural & Civil designing of entire toll plaza canopy.



General items for Toll Plaza are as follows:

- a. Canopy with Roofing.
- b. Metallic False Ceiling (Optional).
- c. Display Boards (Instruction & User Fee).
- d. Lane Signal.
- e. Toll Booths (Single & Reversible).
- f. Booth Protection Guards.
- g. Canopy & Street light.
- h. High Mast.
- i. Island & Bull Nose.
- j. Island Railing.
- k. Lane Marking.
- l. Speed Breaker.
- m. Road Studs etc.



TOLL PLAZA FOB



PEDESTRIAL GUARD RAIL (PGR)

We provide various types of PGR on Expressways/National Highways/state highways/Cities and other places.



TRAFFIC SIGNS

Company undertakes retro reflective sign board works for various road projects. We are a prominent manufacturer and supplier of superior quality **Reflective Signs** or **Road Signs** that are encountering wide demand in the markets. Flawlessly designed in a plethora of attractive colors, designs and sizes, these signs are weather resistant and durable. We can customize these road signs according to clients' drawings and specifications. Our advantage over others is our designing team, who are experts in designing steel structures for gantry, cantilevers etc. with suitable RCC foundations. We are a manufacturer and installer of gantry mounted & cantilever type retro reflective overhead signage, we use various grades of Avery Dennison or 3M reflective sheeting as per the client's specifications.

Various Signs are cut on most advance cutter plotter in our sign shop and every care is taken while pasting to ensure its durability.



The reflective sheet manufacturers are extending us excellent technical support as and when required. All these factors are helpful in fulfilling client's requirements in scheduled time.

Application Areas:

- National highways
- State Highways
- Airports
- Railways • Municipal corporations
- Boarder Roads



SAFETY SIGNS

Considering the inefficiency of normal emergency **Safety Signs**, we offer our clients a fascinating range of safety signs. Complying with international quality standards, these signs are long life. We are offering custom designed signs as per customer's need.



SIGNAGE MATERIALS:

1. Aluminium sheet (2 mm thick) or ACP sheet (3 / 4 mm).
2. Retro reflective sheeting (3M):



a. High Intensity Grade

Sheeting: This sheeting is encapsulated lens type consisting of spherical glass lens, elements adhered to a synthetic resin and encapsulated by a flexible, transparent waterproof plastic has a smooth surface.

b. Engineering Grade Sheetting: This sheeting is enclosed lens type consisting of microscopic lens elements embedded beneath the surface of a smooth, flexible, transparent, water-proof plastic, resulting in a non-exposed lens optical reflecting system.

3. Back frame made by ISA 40 x 40 x 5 mm or as per approved drawing.



4. Vertical Post: Generally used 65 NM MS pipe or ISA 76 x 76 x 6 mm or as per approved drawing.

5. Concrete: M20 grade (mix 1:2:4)

6. Reinforcing Steel: According to IS: 1786 or as per drawing.

7. Bolts, Nuts, Washers: High strength bolts shall confirm to IS: 1367 whereas precision bolts, nuts etc. shall confirm to IS: 1364 or as per drawing.

8. Plates and supports: Plates and support section for the signposts shall confirm to IS: 226 and IS: 2062 or as per drawing.

9. Message/Borders: The message (legends, letters, numerals, etc.) and borders is either screen-printed or cut-outs.

Range of Sign Products:

- Highway Signboards
- Cautionary Signboards.
- Regulatory Signboards.
- No Entry Signboards.
- Traffic safety caution signboards.
- Weather resistant Signboards.
- Hazard Markers (one / two way) & Object Markers.
- Cluster of Red Reflector.
- Road Studs (3M Make), & Bollards etc.
- Toll Plaza Boards.
- Mandatory Signboards.
- Delineator Signboards.
- Corporate Road Signs.

GANTRY / CANTILEVER SIGNS

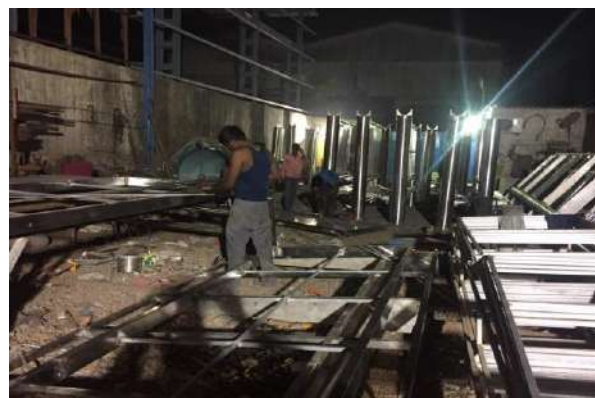


We provide our best products & services for supply, fabrication & installation of Overhead Gantry, Cantilever & VMS Gantry including Signboards. We have own fabrication unit and we are liable to fulfill client's requirements.



SS FABRICATION / ERECTION

We have a workshop for SS fabrication at Kalamboli in which there are so many machineries / Equipments / Tools are available and have sufficient workmanship to fulfill the target on time. We provide all types of SS job with materials or on turnkey basis across India.



FOOT OVER BRIDGE (F.O.B.)

We are engaged in providing the optimum quality M.S. Foot Overbridge fabrication / erection services. The offered service is rendered using the optimum quality mild steel and advanced technology by our qualified professionals. We provide this over bridge fabrication / erection services by a team of experienced professionals for Roads, Highways, Industries, Railways & other commercial places. To ensure its perfection, this service is strictly monitored by our senior management team.



These bridges are made up of Heavy Structures of Tubular Sections, Rolled Steel Sections or Pre - Engineered Sections. Flooring of bridges is of checkered steel plates or Pre-cast RCC slabs covered by floor tiles or roads.

cast RCC slabs covered by floor tiles or roads.

PIPE CARRYING BRIDGE

We provide design, fabrication & installation of water supply Hume pipe carrying bridge with the help of this bridge the pipe cross to River, Ponds, Hills etc and supply water to required persons.



PARKING SHED

We fabricate and erect parking shed made by MS pipe, Channel, Angle used pre coated galvalume roofing / Poly carbonate sheets or as per drawing given by clients for providing parking facilities at toll plaza, office, complex, factories and more.



HEAVY STRUCTURAL STEEL FABRICATION & ERECTION

INDUSTRIAL PLANTS

We are one of the leading service provider engaged in industrial plants fabrication, erection & commissioning services for Oil Plant, Sugar Plant, Cement Plant, Bakery Plant, Steel Rolling Mills, Ball Mills, Crushers, Mill Headers, Erection services of WTPS, STPS, ETPS & bulk material handling system.



CIVIL CONSTRUCTIONS

We are engage in the field of building, Industrial infrastructure i.e. Industrial Shed, RCC Building,



Tanks, Labor Quarter, Office Building, Institutional Building, Lab Construction etc on turnkey basis as well as a labor contractor who deals in all types of civil construction, maintenance and interior, our services are done in cost effective ways.

The company is having sufficient infrastructure of machinery & equipments. Besides this the company has highly dedicated and skilled employees including project managers, Engineers, Supervisors and fully skilled account department.



Clients List

• L&T Construction Limited.

WORKS 1: Supply & Fixing of 61 Nos. Smart Bus Stop Shelters & 56 Nos. Smart Cycle Stand at **Ranchi Smart City** in Jharkhand.

WORKS 2: Supply & Fixing of 5 BRTS Bus Station at **Rajkot Smart City** in Gujrat.

WORKS 3: Supply & Fixing of Smart Bus Stop Shelters at Thana Namkum, Jharkhand.

WORKS 4: Supply & Fixing of 17 Nos. Toll Booths & 108 Nos. Guard Rails at Six laning of KM 192. To KM 198 Between Vadodara – Surat 3RD Narmada Extra Dosed Bridge.

WORKS 5: Supply & Fixing of Retro-Reflective Traffic signboards at Jharsuguda project in the state of Orissa.

WORKS 6: Supply of Road Safety Signboards at KANAKTORA-JHARSUGUDA ROAD ON NH-200 (ODISSA)

• ADANI POWERS.

WORKS: Supply & Fixing of 2Nos. Bus Shelters at Adani Power Plant, Udupi, Karnataka.

• **FORTUM CHARGE & DRIVE PRIVATE LIMITED.**

PROJECT: Car Shed Work at Hyderabad Airport

WORKS: Construction of 51 Nos of Car Shed Work with Supply & Installation Hyderabad Airport Hub.

• **NATIONAL HIGHWAY AUTHORITY OF INDIA.**

PROJECT: SHILLONG BYPASS ON NH-40 (MEGHALAYA)

WORKS: Construction of Toll Plaza Canopy, Booths, Toll Operation Systems, Electrifications, Admin Office etc.

• **AGARTALA SMART CITY LIMITED, TRIPURA.**

WORKS I: Supply & Fixing of 40 Nos. of Stainless Steel Bus Stop Shelter on Various Places in Agartala City.

WORKS II: Supply & Fixing of 10 Nos. of Thematic Bus Stop Shelter on Various Places in Agartala City.

• **AGARTALA MUNICIPAL CORPORATION, TRIPURA.**

WORKS I: Supply & Fixing of 7 Nos Stainless Steel Bus Shelters.

• **U.P STATE CONSTRUCTION & INFRASTRUCTURE DEVELOPMENT CORPORATION LTD.**

WORKS: Supplying & Fixing of 31 nos. SS-304 Bus Stop Shelters under M.P Fund in Jaunpur, Uttar Pradesh.

• **DHIRAJ TRADERS (SRIRAM INFRA).**

WORKS I: Toll Plaza Canopy & 5 Nos Toll Booth with Protection guard, Toll Plaza Signboards, Street Light and High Mast at Toll Plaza Premises and Hybrid ETC Toll Management System at Kanker Road Project, Chattisgarh.

• **WESTERN ODISHA URBAN TRANSPORT SERVICE LIMITED.**

WORKS: Supplying & Fixing of 11 nos. Stainless Steel Bus Stop Shelter within Municipal Corporation Limit, Sambalpur.

• **OIL & NATURAL GAS CORPORATION LTD.**

WORKS: Supply & Fixing of 3 Nos of Stainless Steel Bus Stop Shelter with civil & electrical work at ONGC Premises, Jorhat Assam.

• **HINDUSTAN CONSTRUCTION COMPANY LIMITED. (HCC)**

WORKS: Supply & Fixing of 4 Nos of Bus Shelters at near Kolkata, (W.B.)

WORKS: Supply & Fixing of 24 Nos of Bus Shelters at Jorhat, Assam.

• **MAHANADI COALFIELDS LIMITED.**

WORKS: Supply & Fixing of 5 Nos of Stainless Steel Bus Stop Shelters at Sambhalpur, Odisha

• **JMC PROJECTS (INDIA) LTD.**

WORKS 1: Supply & Fixing of 14 Nos. SS-304 Bus Stop Shelters at Madurai Project in the state of Tamilnadu.

WORKS 2 : Supply & Fixing of 2 Nos. Cantilever & 2 Nos. Over Head Gantry Sign at Mankhurd-Ghatkopar Link Flyover.

WORKS 3: Supply & Fixing of 3 nos. Over Head Gantry & 1 no. Cantilever Signboards at SAKOLI & LAKHANI TOWN FLYOVER, BHANDARA.

WORKS 4: Supply & Fixing of 10 Nos. Over Head Gantry Sign at Channa Giri Road Project in the state of Karnataka.

WORKS 5: Supply & Fixing of Foot Over Bridge at Channa Giri Road Project in the state of Karnataka.

• **SHELKE CONSTRUCTION PRIVATE LIMITED.**

WORKS 1: Supply & Fixing of 4 Nos Mild Steel Bus Stop Shelters and

WORKS 1: Supply & Fixing of 2 Nos Overhead Gantry Board (36 MTR & 32 MTR) at Shree Sant Tukaram Maharaj Palkhi Mahamarg (Patas – Baramati) Road project in the state of Maharashtra.

WORKS 3: Supply & Fixing of Foot Over Bridge at Shree Sant Tukaram Maharaj Palkhi Mahamarg (Patas – Baramati) Road project in the state of Maharashtra.

• **POWER BANK (Suchi Anant Virya Pvt. Ltd.)**

Works: Supply & Fixing of 21 Nos. EV Charging Station Canopy at entire city of Delhi.

• **DALMIA CEMENT.**

WORKS: Supply & Fixing of SS Bus Stop Shelter at Chennai.

• **NP INFRA PROJECTS PVT. LTD.**

WORKS: Supply & Fixing of 8 Bus Stop Shelter at Pune, Maharashtra.

• **RELIANCE INDUSTRIES LIMITED, JAMNAGAR.**

WORKS: Providing & Fixing of SS-304 Bus Stop Shelters at Reliance Greens - JAMNAGAR.

• **J.N. PORT TRUST, MUMBAI.**

WORKS I: Providing & Fixing of Bus Stop Shelters & Traffic Sign.

WORKS II: Supply of Traffic Signs.

• **PUNJ LLOYD GROUP, INDIA.**

WORKS: Providing of Retro-reflective Sign Boards at Simga Road Project, Chhattisgarh.

• **SEVEN DAWN SOLUTIONS PVT. LTD**

WORKS: Supply & Fixing of 30 Bus Shelters at Barwa – Adda section of NH-2 from Km. 398.240 to Km. 521.120 in the States of Jharkhand and West Bengal.

• **MAHARASHTRA TOURISM DEVELOPMENT CORPORATION LTD.**

WORKS: Providing & Fixing Tourism Information Signage (Cantilever) along Major Road at Kokan Region.

• **BIRLA INSTITUTE OF TECHNOLOGY (RANCHI).**

WORKS: Supply & Fixing of SS-304 Bus Stop Shelters.

• **BHAGALPUR MUNICIPAL CORPORATION BIHAR.**

WORKS: Supplying & Fixing of 10 nos. Stainless Steel Bus Stop Shelter within Municipal Corporation Limit, Bhagalpur.

• **T AND T INFRA LTD.**

WORKS I: Supply & Fixing of Cantilever Sign Boards at Dehu Road (Pune).

WORKS II: Supply & Fixing of Cantilever Sign Board at Sai Chowk (Pune).

WORKS III: Supply & Fixing of 2 Nos. MS Overhead Gantry Sign Board at Kalamboli Flyover.

WORKS IV: Supply & Fixing of Traffic Sign Boards & Overhead Cantilevers at Khopoli- Murbad NH 548A.

WORKS V: Supply & Fixing of 2 Nos. GI Overhead Gantry Boards at Nawade Phata, Taloja Flyover on NH-48 (Navi Mumbai)

WORKS VI: Supply & Fixing of Traffic Sign Boards & Advance Direction Boards at Manchar, Khed Sinner in Maharashtra.

• **LEJONET ITS TECHNOLOGIES PVT LTD.**

WORKS: Supply & Fixing of 7 nos. MS Over Head Gantry Structure & 13 nos. Panel Box at JNPT North Gate, DP World Gate, South Gate & BMCT Gate.

• **SHAHI EXPORTS PVT. LTD.**

WORKS I: Supply & Fixing of 08 Nos. MS Bus Shelters at Mysore, Karnataka.

WORKS 2: Supply of Information Signboards for Jal Jeevan Mission in MP.

• **JHARKHAND MLA MINISTER PROJECT**

WORKS: Supply and fixing 30 Nos Bus Shelters at Garwah, Jharkhand under MLA Project.

• **SHIVDURGA INDUSTRIES**

WORKS: Supply and fixing 30 Nos Bus Shelters at Bhagalpur, Bihar

• **JAI ENTERPRISES**

WORKS: Supply & Fixing of Bus Shelter at NOFRA (NAVY Nagar), Colaba, Mumbai.

• **ARYA OMNIK WIRELESS PRIVATE LIMITED**

WORKS: Supply and fixing of 4 Nos VMS Gantries at Ahmednagar, Maharashtra.

WORKS II: Supply and fixing of 2 Nos VMS Gantries at Hassan, Karnataka

• **PRALOY KUMAR BHOUMIK**

WORKS: Supply and fixing of Bus Shelter at Agartala, Tripura

• **STERLING CONTRACTORS**

WORKS: Supply and fixing of 04 Nos. SS Smart Bus Shelter at Kalyan Smart City, Mumbai, Maharashtra

• **ANS INFRASTRUCTURE**

WORKS: Supply and fixing of 03 Nos. SS Smart Bus Shelter at Kalyan Smart City, Mumbai, Maharashtra.

• **TRINITY TECHNOLOGIES**

WORKS: Supply & Fixing of MS Overhead Gantry Structure of 5 Nos at Hubli, Karnataka

• **MRP ASSOCIATES**

WORKS: Supply and fixing of Pump house sheds in Dhule, Maharashtra

• **MANISHA CONSTRUCTION**

Supply and fixing 30 Nos Bus Shelters at Ahmednagar, Maharashtra.

• **SRINIVAS CONSTRUCTION**

Supply and fixing 12 Nos Bus Shelters at Bhome, Maharashtra.

• **SARJAN INFRACON PVT. LTD. (AHAMABAD, GUJARAT)**

WORKS 1: Supply & Fixing of 27 Nos. MS Bus Stop Shelters at Washim & Prabhani Road Project in Maharashtra.

WORKS 2: Supply & Fixing of Foot Over Bridge at Washim & Prabhani Road Project in Maharashtra.

• **RAJDEEP BUILDCON PVT. LTD.**

WORKS: Supplying & Fixing of 20 nos. MS Bus Stop Shelter at Bijapur-Hubli (NH-218) Road Project in Karnataka.

• **ALL GRACE DEVELOPERS PVT. LTD.**

WORKS 1: Supply & Fixing of 6 Nos. of SS-304 Grade Bus Stop Shelter, Retro-reflective Sign Boards & Over Head Gantry at Katraj project in Pune City, Maharashtra.

WORKS 2: Supply & Fixing of 5 Nos of SS Bus Stop Shelter, Retro-reflective Sign Boards & Cantilever boards at Murbad-Khopoli NH-58A Road Project.

• **MADHUCON PROJECTS LIMITED.**

WORKS1: Providing & Fixing of Road Traffic Signboards at RANCHI - JAMSHEDPUR SECTION ON NH-33 (JHARKHAND).

WORKS2: Supply of Road Traffic Signboards at Madurai - Tuticorin SECTION NH-45B (Tamil Nadu).

• **GKC PROJECTS LTD.**

WORKS1: Construction of Toll Booths at SINDHANUR-GANGAVATI ROAD ON SH-23 (KARNATAKA)

WORKS2: Construction of Toll Booths at RAEBARELI ROAD PROJECT IN THE STATE OF UP.

WORKS3: Construction of Structural Steel Bridge 25 Mtr at KOLHAPUR WATER SUPPLY PROJECT IN THE STATE OF MAHARASHTRA.

WORKS4: Construction of Structural Steel Canal Crossing Bridge 30 Mtr at HASSAN WATER SUPPLY PROJECT IN THE STATE OF KARNATAKA.

WORKS5: Providing & Fixing of MS Bus stop shelters (7 Nos.), F.O.B. Toll Plaza Canopy & Toll Booths at Raipur, Chhattisgarh.

• **R.K. Chavan Infrastructure Private Limited**

WORKS I: Supply & Fixing of 14 Nos. of MS Bus Stop Shelter at Wadi-Asola Road Project, Maharashtra.

WORKS II: Supply & Fixing of 46 Nos. of Mild Steel Bus Stop Shelters, 3 Nos. Gantries and 6 Nos. Cantilevers at Gadchandur, Maharashtra.

WORKS III: Supply & Fixing of 5 Nos. Toll Booth with Protection Guard, 2 Nos MS Bus Shelters and misc. works at Pandharpur Toll Plaza, Maharashtra.

WORKS IV: Supply & Fixing of Toll Plaza Canopy at Aurangabad Sillod Road Project, Maharashtra.

WORKS V: Supply & Fixing of Pedestrian Guard Railing 8340 RMT, 20 Nos. MS Bus Shelters & 1 No Toll Plaza FOB at Jintur Shirad Shahapur Road Project, Maharashtra.

WORKS VI: Supply & Fixing of Pedestrian Guard Railing 7300 RMT and 12 Nos SS Bus Shelters at Dharampuri Lonand Road Project, Maharashtra.

• **MONTECARLO LIMITED.**

WORKS I: Supply & Fixing of 16 Nos. of Mild Steel Bus Stop Shelter on Various Places at Fatuah-Harnaut-Barh Section (Km 0 to 69.6) of NH 30A In the State of Bihar.

• **ITD CEMENTATION INDIA LIMITED.**

WORKS: Supply of Portable Toll Booths, Supply & Fixing of Traffic Signs Board, Cantilever Signboards & Kerb Painting at PUNE-SATARA ROAD ON NH-04 (MAHARASHTRA).

WORKS: Providing & Fixing of PEB Office at JSW JAIGAD PORT (MAHARASHTRA). PROJECT3 WORKS: Pre Engineered Building at JNPT Mumbai.

• **RAJPATH CONTRACTORS & ENGINEERS LIMITED.**

WORKS: Providing & Fixing of Bus Stop Shelters (10 Nos) at NH-34 in the District of North 24 Parganas, West Bengal.

• **IRCON INTERNATIONAL LIMITED.**

WORKS I: Supply Retro Reflective Traffic Sign Boards at 4 Laning of Shivpuri-Guna Section of NH 03 From Km. 236.00 to 332.00 in the State of Madhya Pradesh.

• **CARYSIL LIMITED**

WORKS: Supplying & Fixing of 2 Nos MS Bus Stop Shelter at Bhavanagar, Gujrat.

• **SWASTIK INFRA-LOGIC (INDIA) PVT.LTD.**

WORKS: Supplying & Fixing of 17 nos. MS Bus Stop Shelter at Bhadgao-Chalisgaon NH-573J Road Project.

• **EAGLE INFRA INDIA LTD.**

WORKS: Supply of Traffic Sign Boards at Borghat to Khopoli NH-04 Road Project.

• **RUNGTA SONS PVT. LTD.**

WORKS I: Supply & Fixing of 06 Nos. of Stainless Steel Bus Stop Shelter on Various Places in Bonaigarh, Odisha.

• **NAGRAJ CONSTRUCTIONS.**

WORKS I: Supply & Fixing of 8 Nos of SS Bus Stop Shelter with civil work complete at Hospet District Project in Karnataka.

• **ORIENTAL STRUCTURAL ENGINEERS PVT. LTD.**

WORKS: Supply & Fixing of Bus Stop Shelter 22 Nos at Nagpur Forest Section in the State of Maharashtra.

• **DSE ENGINEERING PVT. LTD.**

WORKS: Providing Toll Plaza Island Railing (80 Nos) at Sunder Town, Karnataka.

• **AVALAMB SERVICES PVT. LTD.**

WORKS: Supply & Fixing of Canopies, Gantries and Cantilevers at MPT, Vasco Goa.

• **BLA PROJECTS PVT. LTD.**

WORKS: Construction of Toll Plaza Canopy (3 Nos.) & Toll Booths (12 Nos.) at NH-60, Rampur Hat, Birbhum (West Bengal)

• **RONAK CONSTRUCTION (Government Approved Contractor).**

WORKS I: Supply & Fixing of 40 Nos. MS Bus Shelters at Bharuch in Gujarat.

• **NKC PROJECTS PVT. LTD.**

WORKS: Supply & Fixing of MS Bus Stop Shelter at Kullu Road Project in Himachal Pradesh.

• **HORIZON PROJECTS PVT. LTD.**

WORKS: Supply & Fixing of SS Bus Stop Shelters at MY CITY PHASE II (CLUSTER IV) PROJECT IN DIVA-MANPADA ROAD, MUMBAI.

• **PROCART (HINDUSTAN COCA COLA BEVERAGES PVT. LTD)**

WORKS: Supply & Fixing of Decenter Shed & Sludge Tank at HINDUSTAN COCA COLA BEVERAGES PVT. LTD Plant at Bhopal, Madhya Pradesh.

• **DP WORLD.**

WORKS: Supply & Fixing of MS Bus Stop Shelters at JNPT area.

• **RNS INFRASTRUCTURE LTD.**

WORKS: Construction of 6 Nos Toll Booths at Bijapur-Hubli (Hubli-Navalgund) Road Project.

• **NIKHIL INFRA, PUNE.**

WORKS: Providing of Retro-reflective Sign Boards at PN33 & PN 34 (Part IV-Ranjangaon to Narayangaon Road Project, KM 0/00 To KM 52/907)

• **SARASWATI DHANWANTARI (Dental College & Hospital)**

WORKS: Supply & Fixing of Powder Coated Bus Stop Shelter at Parbhani in the state of Maharashtra.

• **SACRED HEART SCHOOL, KALYAN**

WORKS: Supply & Fixing of SS Bus Shelter at school premises, Kalyan, Maharashtra.

• **JM FABTECH.**

WORKS: Supply & Fixing of 06 Nos. SS Bus Shelters at Karjat in Maharashtra.

• **ADARSH MEHER.**

WORKS I: Supply & Fixing of 04 Nos. of Stainless Steel Bus Stop Shelter on Various Places in Sundargarh, Odisha.

• **BREN CORPORATION.**

WORKS: Supply & Fixing of SS-304 Grade Bus Stop Shelters at Bren Imperia project in Bangalore.

• **JANHVI ENTERPRISES.**

WORKS: Supply & Fixing of 4 Nos of Over Head Gantry at & Khed Shivpur Toll Plaza.

• **KOHINOOR GROUP.**

WORKS: Supply & Fixing of SS Bus Stop Shelters at Ulhasnagar.

• **SWETAL ENTERPRISES.**

WORKS: Supply & Fixing of MS Bus shelters at Nagpur, Maharashtra.

• **MANGALDEEP MULTI SERVICES.**

WORKS: Providing of Retro-reflective Sign Boards at Aurangabad Road Project.

• **MAN INFRACONSTRUCTION LTD.**

WORKS: Supply of Various types of Retro-reflective Signboards at JNPT, Maharashtra.

• **EQUINOX INFRA VISION.**

WORKS: Supply of Gantry Structure at Aurangabad Maharashtra.

• **SHIVAM INFRATECH.**

WORKS: Supplying & Fixing of Stainless Steel Bus Stop Shelter in Baga, GOA.

WORKS I: Supply & Fixing of SS-304 Bus Stop Shelter.

• **VIN SEMICONDUCTORS PVT. LTD.**

WORKS I: Supply of 02 Nos Over Head Gantry Structure at Statue of Unity, Baroda, Gujrat.

• **MTNL, MUMBAI.**

WORKS: BTS Shelter Rectification at Entire Mumbai Suburban Area.

• **ARSS INFRASTRUCTURE PROJECTS LTD.**

WORKS I: Supply & Fixing of 40 Nos. MS Bus Stop Shelter at 4 Laning in the state of Odisha.

• **IG PETROCHEMICALS LTD.**

WORKS I: Supply & Fixing of Canopy for PA4 Plant at T-2 MIDC Industrial Area Taloja, Maharashtra.

• **Godrej Properties Limited.**

WORKS I: Supply & Fixing of SS Bus Stop Shelters at Godrej City Panvel.

• **Radheshyam Agrawal.**

WORKS: Construction of Toll Plaza Canopy (1 Nos.) & Toll Booths (5 Nos.) on the project of Rehabilitation and Upgradation of NH-200 (New NH- 49) Chhattisgarh

• **ROYAL CONSTRUCTION.**

WORKS I: Supply & Fixing of 40 Nos. MS Bus Stop Shelter at Rural Area Project in Ambikapur, Chhattisgarh.

• **DNH LAND DEVELOPERS**

WORKS: Supply & Fixing of Car Parking shed at Tumb, Gujarat.

• **ASHOKA BUILDCON LIMITED**

WORKS: Construction of Toll Booths at JTCL PROJECT ON SH-31 (MADHYA PARDESH)

• **UNIVERSAL BUSINESS SCHOOL**

WORKS: Supply & Fixing of Mangalore Tile Roofing with structure at Karjat in the state of Maharashtra.

• **L&W Construction Pvt. Ltd.**

WORKS: SUPPLY, FABRICATION & FIXING OF 04 NOS OF TEMPORARY SHED at IGATE PROJECT (AIROLI NAVI MUMBAI).

• **GANGA CONSTRUCTION CO.**

WORKS: Providing & Fixing Of Cantilever Type Parking Shed at LATUR (MAHARASHTRA).

• **NATIONAL ORGANIC CHEMICAL INDUSTRIES LTD.**

WORKS: Providing & Fixing Of Steam Pipe Line Canopy at PAWNE GAON NAVI MUMBAI.

• **MONICA CONSTRUCTION.**

WORKS I: Providing & Fixing of Traffic Signs at MIDC Patal Ganga Panvel.

• **SVAMIN ENTERPRISES.**

WORKS I: Providing & Fixing of Overhead Gantry / Cantilevers at various locations in Maharashtra.

• **SHRISHRI INFRASTRUCTURE PVT. LTD.**

WORKS I: Providing & Fixing of MS Powder Coated Bus Stop Shelters at Aurangabad, Maharashtra.

• **BSCPL INFRASTRUCTURE LIMITED.**

WORKS I: Construction of Toll Plaza Canopy AND

WORKS II: Providing & Fixing of Bus Stop Shelter at DEVIHALLI-HASSAN SECTION ON NH-48 (KARNATAKA)

• **TATA REALTY & INFRASTRUCTURE LIMITED (PSEPL).**

WORKS: Construction of Toll Booths PUNE-SOLAPUR SECTION ON NH-09 (MAHARASHTRA)

• **METRO GLASS**

WORKS: Supply & fixing of Retro Reflective Signboards at BARC, Mumbai.

• **KMC CONSTRUCTIONS LIMITED.**

WORKS 1: Construction of Toll Plaza Canopy (4 Nos.) at CUDDAPAH-KURNOOL SECTION ON NH-18 (ANDHRA PRADESH)

WORKS 2: Supply, Fabrication & Erection of Road Safety Signboards, Gantry / Cantilever Boards & Toll Plaza Instructions Boards etc.

• **RAM CHANDRA PAUL & CO.**

WORKS: Construction of Toll Plaza Canopy & Toll Booths at KIYABUNI, CHANDRAKONA ROAD, PASCHIM MIDNAPORE ON NH-60 (WEST BENGAL).

• **FIBERTECH INFRACON PVT. LTD.**

WORKS: Installation of Intra-City Optical Fibre Cable network by HDD method at THANE, MUMBAI (MAHARASHTRA).

• **OMM SUPPLIER & CONSTRUCTION PVT. LTD.**

WORKS: Supply and fixing of Bus Stop Shelter at G.Udayagiri, Odisha.

And many more...

FACILITIES

Details of Machines in Work Shop:

1. Welding Machine (Transformer): 10 Nos.
 2. Welding Machine (Electronic): 12 Nos.
 4. Drilling Machine (Up to 40 mm): 04 Nos.
 5. Drilling Machine (Up to 25 mm): 06 Nos.
 6. Drilling Machine (Up to 15 mm): 06 Nos.
 7. Pug Machine: 02 Nos.
 8. Gas Cutting Set: 06 Set.
 9. Plasma Cutting Machine: 1 Set.
 10. Grinder Machine: 20 Nos.
 11. Electrical Cutting Machine: 05 Nos.
 12. Painting Compressor Machine: 02 No.
- And so many other hand Tools & Tackles.

Commercial Vehicle Detail:

1. Mahindra Pickup: 01 No.

Work Shop Address:

Work Shop Address: 447, Khidukpada, Kalamboli Steel Market-Navi Mumbai, Maharashtra-410218.

Work Shop Area: 3000 SQFT

Expertise in:

SS/MS/Modern Bus Stop Shelters	Warehouse / Roofing Shed
Toll Plaza Canopy / FOB	Car / Vehicle Parking Shed
Toll Booths	Pedestrian Guard Rail (PGR)
Toll Booth Protection Guard	General Fabrication Works
Over Head Cantilever & Gantry Signboards	Structural Over Bridge for Pipe Line / F.O.B
Road Traffic Signages	Pre-Engineered Building

ORGANIZATIONAL CHART

DESIGNATION	NAME	QUALIFICATION
Director	Mr. P.K. Singh	MBA
	Mrs. Bibha Singh	B.Sc.
Project Coordinator	Mr. Sachin Patil	B-Tech
Manager (B.D.M)	Mr. Snehil Wasnik	B-Tech
Project In-charge	Mr. Mayur Shirke	Mech. Engineer
Project Engineer	Mr. Manish Kumar	B-Tech
Quality In-charge	Mr. J.N. Suryavanshi	B-Tech
Site Supervisor	Mr. Ajij Baitha	Graduate
	Mr. Abhinandan Singh	Graduate
Account Manager	Mr. Vikas Kapadi	M.Com
Fitter	Mr. Virendra Thakur	ITI
	Mr. Sanjiv Thakur	ITI
	Mr. Sarvan Kumar	ITI
	Mr. Shankar Sharma	ITI
	Mr. Md Nizamuddin	ITI
	Mr. Lakshman Kumar	12th
	Mr. Sunil Sharma	12th
Welder / Gas Cutter	Mr. Bijay Singh	Graduate
	Mr. Ramkumar Prajapati	ITI
	Mr. Chandrashekhar	12 th
	Mr. Deepak Bhardwaj	12 th
	Mr. Diwakar	10 th
	Mr. Ram Kumar	10 th
	Mr. Santosh Thakur	10 th
	Mr. Sonu Bhardwaj	10 th
	Mr. Natwarlal Yadav	12 th
	Mr. Fayaz	10 th
	Mr. Armaan	10 th
Mr. Rajkumar	10 th	
Semi-Skilled	Mr. Mahanand Kumar	10 th
	Mr. Md Shakeel	10 th
	Mr. Nirgun Kumar	8 th
	Mr. Md Sultan Hasan	8 th
	Mr. Md Ful Hasan	10 th
	Mr. Shravan Kumar Safi	10 th
	Mr. Jasvir Kumar	10 th
	Mr. Dharmendra Kumar	10 th
	Mr. Vijay Kumar	10 th
	Mr. Amol Kumar	8 th
	Mr. Roshan Kumar	10 th
	Mr. Md Shoab	10 th
	Mr. Rahul Kumar Sharma	10 th
Mr. Ram Kumar Raman	5 th	

Note: Workmen Labors Varies According to the Project Requirements.

IMAGE GALLERY



KMC (TELANGANA)



BSCPL (KARNATAKA)



HOSPER, KARNATAKA



NHAI, GUWAHATI

NHAI, GUWAHATI



BLA (WEST BENGAL)



**THEMATIC BUS SHELTER
 AGARTALA SMART CITY**



SMART BUS SHELTER



OVERHEAD GANTRY



ONGC BUS SHELTER



CHEVRON BOARD

CONTACT



Complete solution of fabrication works

PBH ENGINEERING & CONSTRUCTION PRIVATE LIMITED.

Telephone: 022 - 27434315

P. K. SINGH (MD) – 09920946341

SNEHIL WASNIK (B.D.M) – 9967688667

MAYUR SHIRKE (PROJECT MANAGER) – 9136760190

VIKAS KAPADI (ACCOUNT MANAGER) - 9930353014

E-mail: info@pbhgroup.in

admin@pbhgroup.in

pbhgroup04@gmail.com

URL: www.pbhgroup.in

www.pbhconstruction.net

